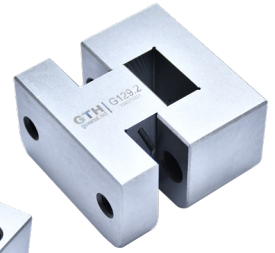
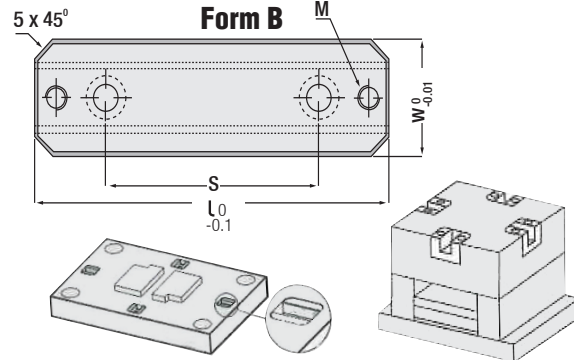
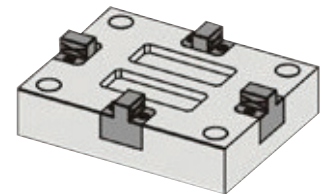
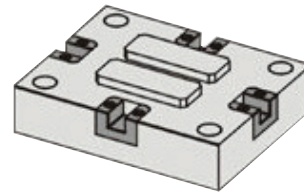
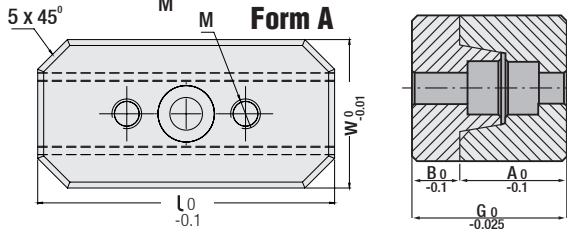
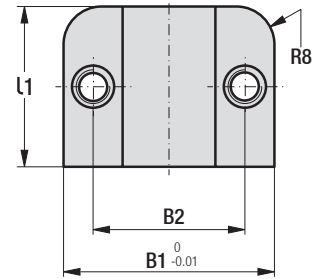
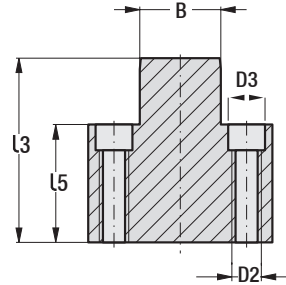
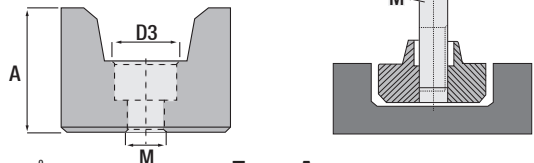
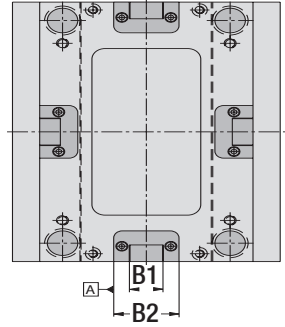
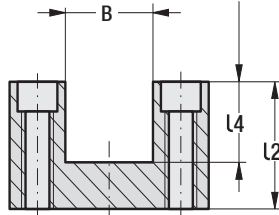
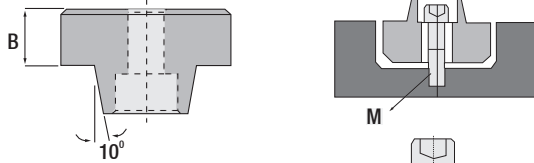




GTH Tasarım
Ürünlerin çalışan yüzeylerinde yağ kanalları oluşturulmuştur.



Montaj Örneği:



Merkezeleme Bloğu

Kod: G 129

Paralel Merkezeleme Bloğu

Kod: G 132

W	L	A	B	G	S	D3	M	Form
25	50	17.5	8	25.5	-	9.6	M5	A
30	100	22	10	32	60	11	M6	B
40	150	25	13	38	100	14	M8	

Tip	B	B1	B2	L1	L2	L3	L4	L5	D3	D2
1	12.7	38.1	25.5	25.4	22.2	22	13.3	9.5	9	M6
2	25.5	63.5	44.5	38.1	34.9	34.8	19.5	15.9	11	M8
3	36.6	88.9	63.5	50.8	44.5	44.2	25.7	19	18	M12

Sipariş: **G129. Tip**

Malzeme: 1.2510
Sertlik: 52 - 54 HRC

Sipariş: **G132. W**

Malzeme: 1.2510
Sertlik: 52 - 54 HRC

Not: "G129" ürünü döner plakalı kalıplar (çok renkli ya da iki komponentli) için uygun değildir. Döner plakalı kalıplarınız için "G131" ürünü kullanınız.